

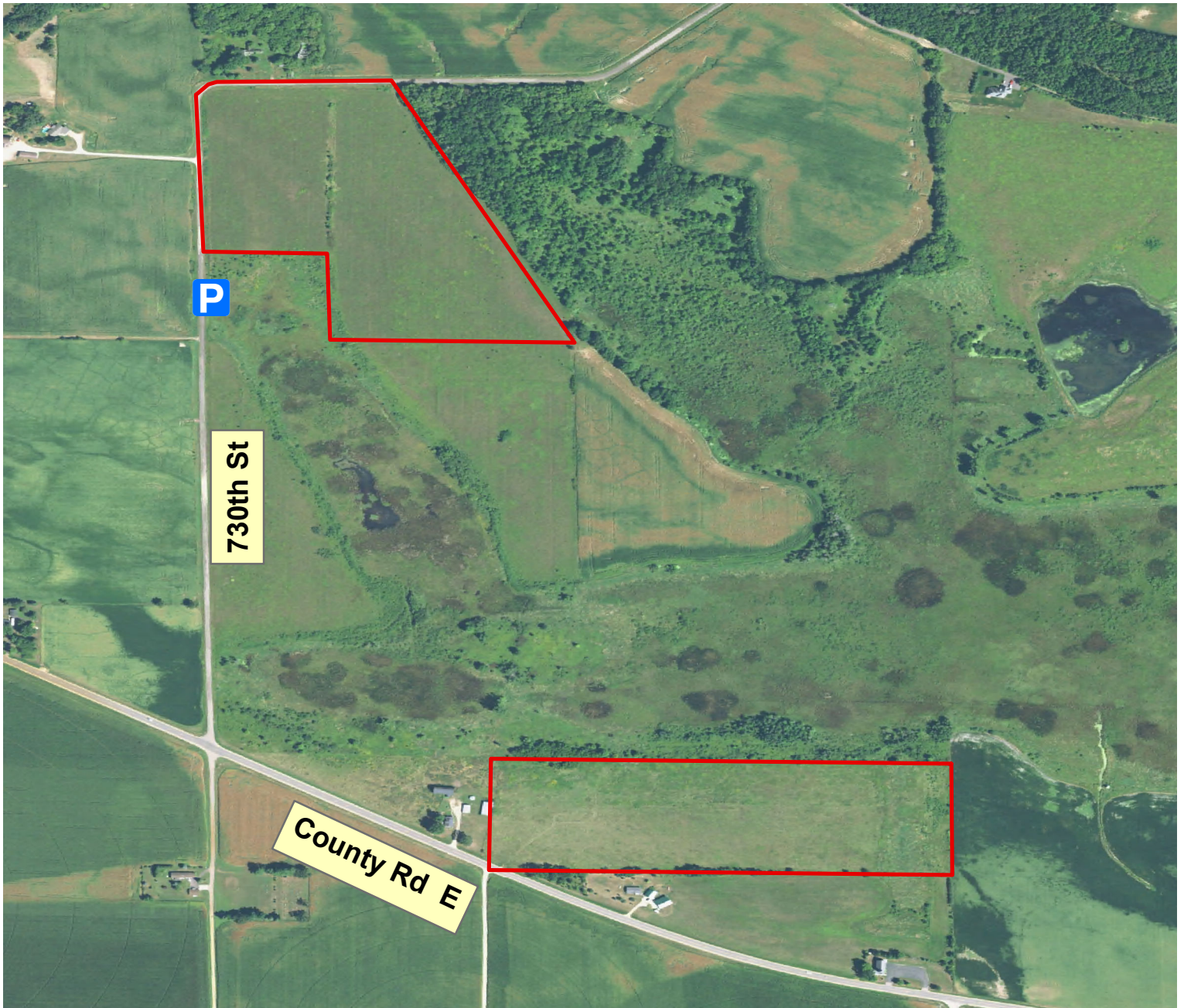


U.S. Fish and Wildlife Service

St. Croix Wetland Management District

Iron Creek WPA

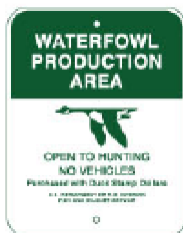
Acres: 52



WPA ADDRESS

E07197 County Rd E South
Menomonie, WI

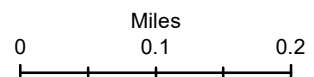
Dunn County
T28N-R12W, Sec35



Parking Lot



WPA Boundary



You can find additional information at:
(https://www.fws.gov/refuge/St_Croix_WMD/) or call (715-246-7784).
Boundaries shown are approximate only. Please adhere to all posted signs.